



Reddington Money Row Green, Holyport, Maidenhead, SL6 2ND
£1,400,000

 **HORLER**

Reddington Money Row Green, Holyport, Maidenhead, SL6 2ND

****Situated less than a mile from Holyport College****

Located in the picturesque village of Holyport, this totally renovated and extended detached home offers spacious and practical family living with four to five bedrooms, a generous driveway, and a garage. The property is ideal for families seeking a peaceful village lifestyle with excellent educational facilities nearby. Maidenhead Town Centre, with its range of shops, restaurants, and leisure amenities, is within easy reach, while nearby rail links provide fast connections to London Paddington in around 20 minutes, making it perfect for commuters.



Property Summary

In the picturesque village of Holyport, this delightful detached home offers a perfect blend of ease and practicality. With three to four or even five spacious bedrooms, this property is ideal for families seeking a tranquil yet accessible location.

The property has undergone a substantial renovation and extension to now offer a very fortunate family the most incredible modern and exclusive living accommodation within one of Berkshire's most sought after villages.

Finished to an exceptional standard throughout, this truly is a home that needs to be seen to be fully appreciated.

Situated less than a mile from the esteemed Holyport College, it is an excellent choice for those prioritising education. The home boasts a generous driveway and a garage, providing ample parking space for residents and guests alike.

The charming surroundings of Holyport enhance the appeal of this residence, while the proximity to Maidenhead Town Centre ensures that all essential amenities are within easy reach. Here, you will discover a diverse selection of shops, restaurants, and leisure facilities, catering to all your daily needs.

For commuters, the nearby railway station offers outstanding transport links, with direct trains to London Paddington taking approximately 20 minutes. This makes the property not only a serene retreat but also a practical choice for those working in the capital.

In summary, this lovely home in Money Row Green presents an exceptional opportunity for anyone looking to enjoy the best of village life while remaining connected to the vibrant city. Don't miss the chance to make this charming property your own.

General Information

Council tax band 'E'

Legal Note

Although these particulars are thought to be materially correct their accuracy cannot be guaranteed and they do not form part of any contract

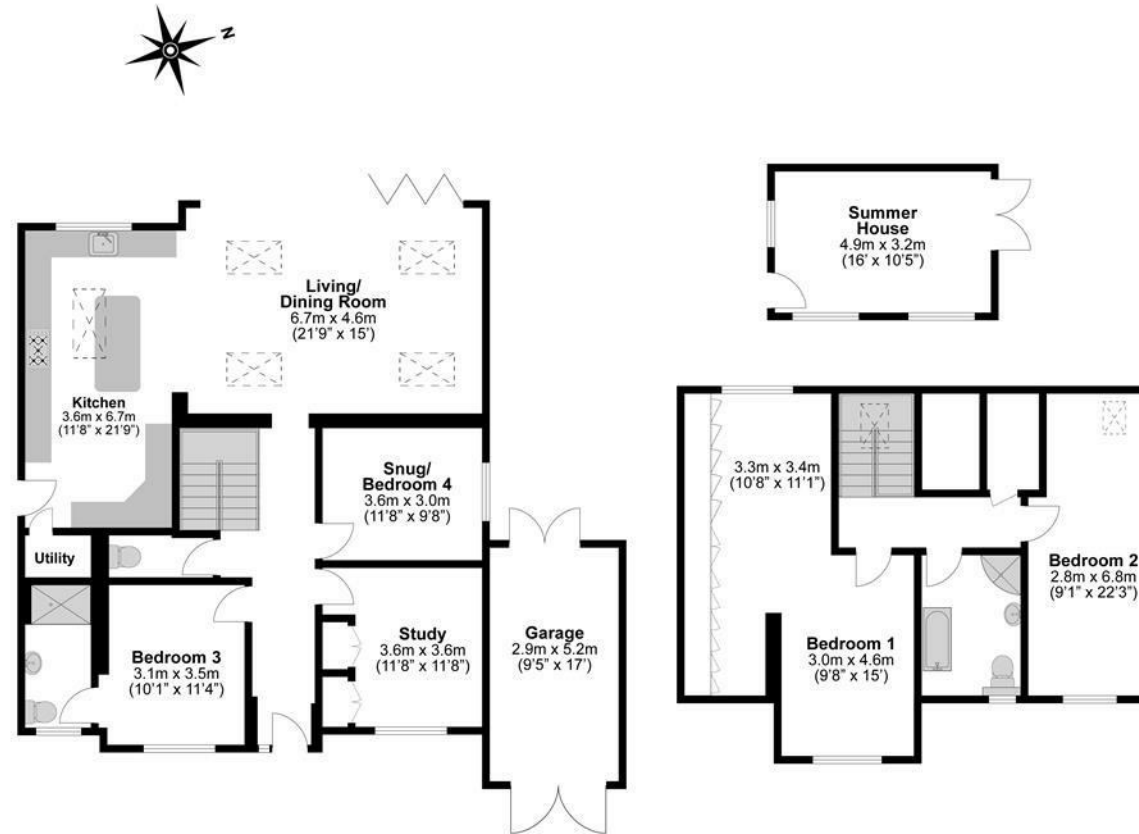




Total Approximate Floor Area

2454 Square feet

228 Square metres



**Illustrations are for identification purposes only,
measurements are approximate, not to scale.**